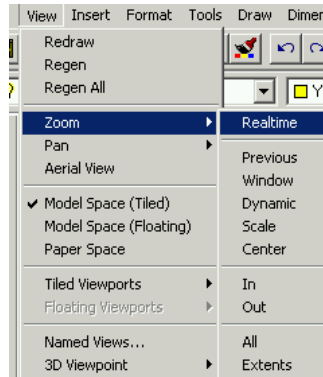


MAK112E Computer Aided Technical Drawing

AutoCAD – Zoom & Pan

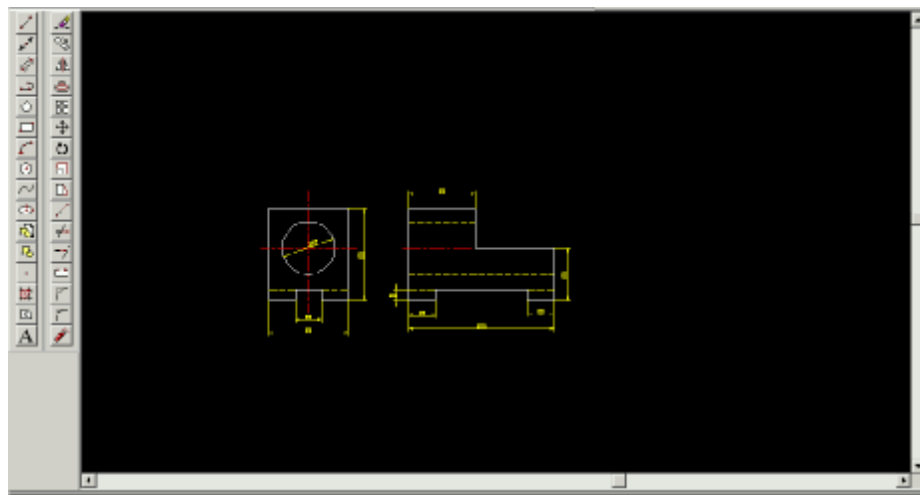
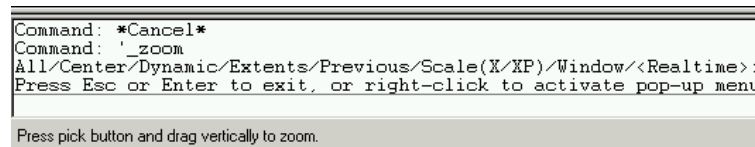
Zoom

Whenever you want to magnify the drawing area you will use Zoom command. You may use this command under the View pull-down menu.

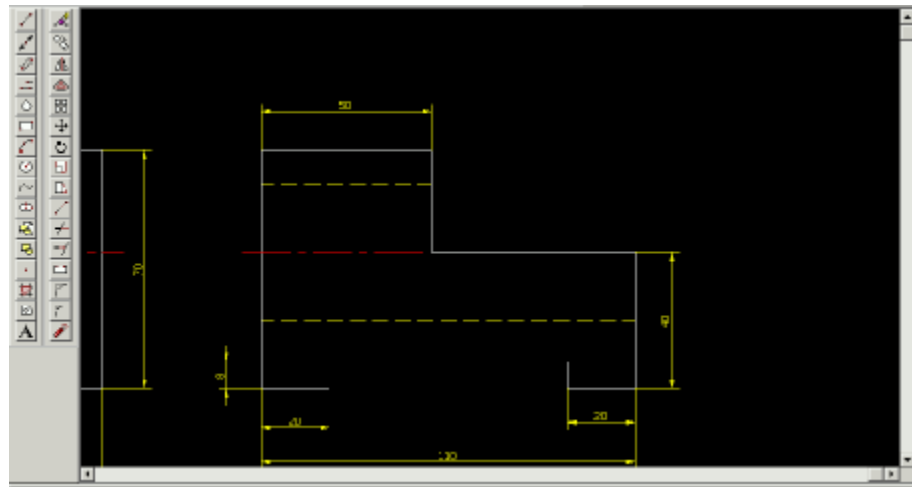


Realtime

It is used to magnify the view of the drawing by means of mouse motion. Press the left mouse button and drag the upper left corner. You may get this on the screen.



If you drag the lower right corner with pressing the mouse left button, you may get the following view on the screen.



To exit the Realtime just press ESC.

You may also get this command typing **zoom** or just **z** at the command prompt.

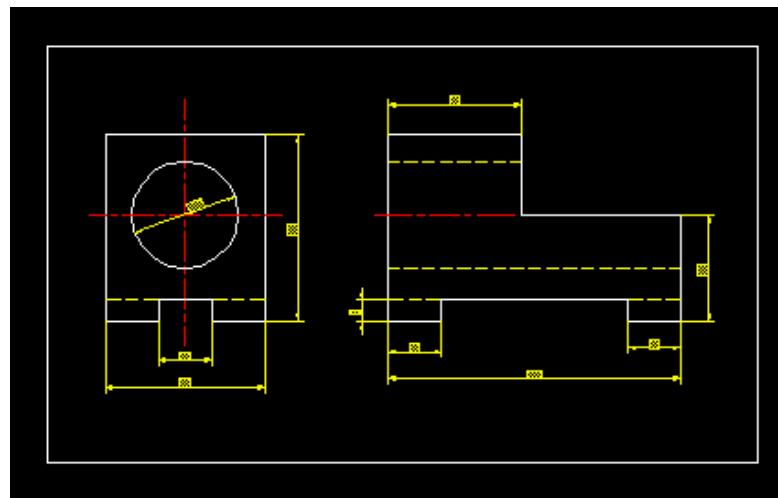
```

Command: *Cancel*
Command: *Cancel*
Command: z
ZOOM
All/Center/Dynamic/Extents/Previous/Scale(X/XP)/Window/<Realtime>:
237.6317,-17.2717,0.0000  SNAP GRID ORTHO OSNAP MODEL TILE
  
```

Easy way to use zoom command is typing **z** and then clicking the corners with the left mouse button without holding.

```

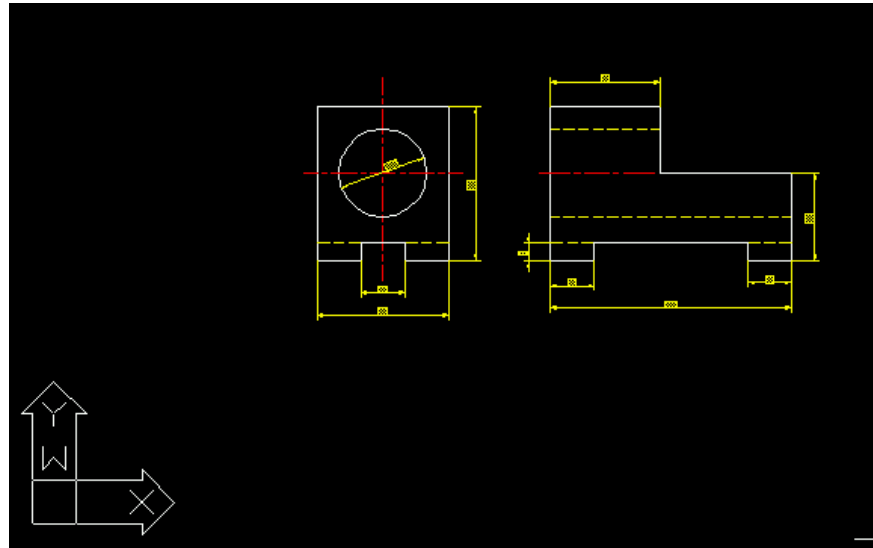
Command: *Cancel*
Command: z
ZOOM
All/Center/Dynamic/Extents/Previous/Scale(X/XP)/Window/<Realtime>:
Other corner:
339.5221,52.2011 ,0.0000  SNAP GRID ORTHO OSNAP MODEL TILE
  
```



o get previous view, just type **p** at the command prompt.

```

Other corner:
Command: z
ZOOM
All/Center/Dynamic/Extents/Previous/Scale(X/XP)/Window/<Realtime>: p
Command: |
356.7334,-21.3988,0.0000  SNAP GRID ORTHO OSNAP MODEL TILE
  
```



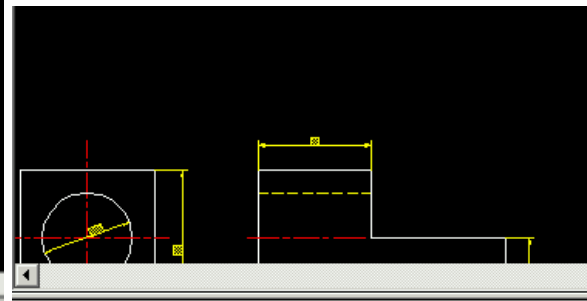
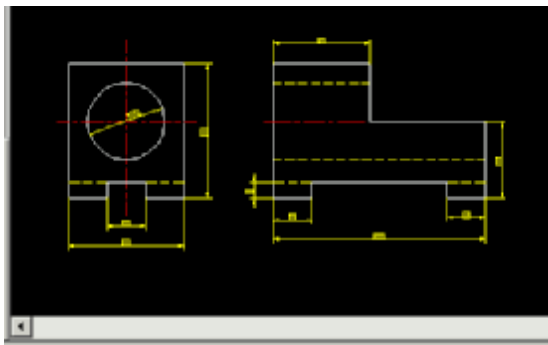
Also you may type **all** and you will get the all objects on the screen.

Pan

Pan command is similar with zoom but, you don't set the magnification.

```

ZOOM
All/Center/Dynamic/Extents/Previous/Scale(X/XP)/Window/<Realtime>: p
Command: pan
Press Esc or Enter to exit, or right-click to activate pop-up menu.
Press pick button and drag to pan.
  
```



You may exit this command pressing **ESC** button, and get the original view using zoom / pervious (**p**) or **all** command.