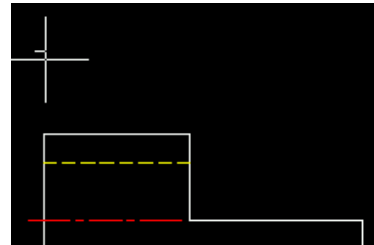


# MAK112E Computer Aided Technical Drawing

## AutoCAD - Typing Text

To type text you may use either **DTEXT** or **MTEXT** command at the command prompt.

```
Select objects:  
<Base point or displacement>/Mu  
_endp of  
Command: dtext  
Justify/Style/<Start point>:  
205.8621,59.8084,0.0000
```



Give the text height or just press enter to accept the current text height.

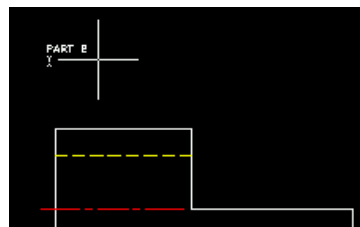
```
<Base point or displacement>/Mul  
_endp of  
Command: dtext  
Justify/Style/<Start point>:  
Height <2.5000>:  
201.1901,203.3487,0.0000
```

You may choose the rotation of the text.

```
_endp of  
Command: dtext  
Justify/Style/<Start point>:  
Height <2.5000>:  
Rotation angle <0>:  
219.8783,203.3487,0.0000
```

```
Justify/Style/<Start point>:  
Height <2.5000>:  
Rotation angle <0>:  
Text: PART 2  
Text: |  
216.3742,200.4312,0.0000
```

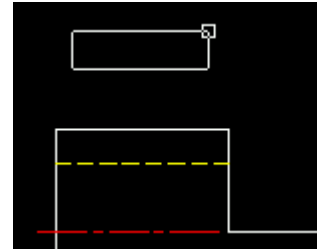
To exit this command press enter.



MTEXT command is similar with DTEXT command with minor differences.

```

Text: PART 2
Text:
Command: mtext
Current text style: STANDARD. Text height: 2.5
Specify first corner:
183.6699,88.9833,0.0000
  
```



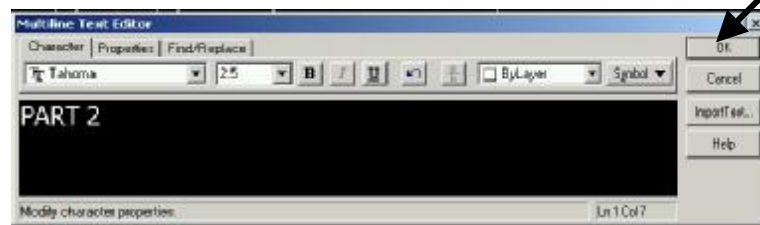
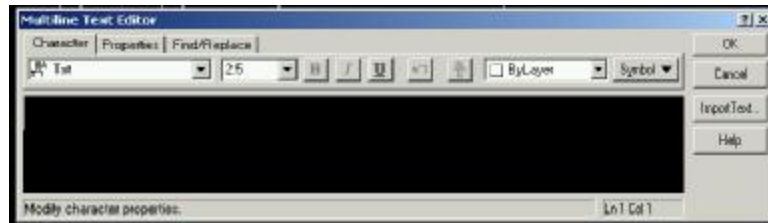
Select the rectangular text area using mouse

```

Command: *Cancel*
Command: mtext
Current text style: STANDARD. Text height: 2.5
Specify first corner:
Specify opposite corner or [Height/Justify/Rotation/Style/Width]
244.9905,203.3487,0.0000
  
```

```

Command: mtext
Current text style: STANDARD. Text height: 2.5
Specify first corner:
Specify opposite corner or [Height/Justify/Rotation/Style/Width]
256.0866,180.0088,0.0000
  
```



You may type multiline text using text icon. The procedure of multiline text command is the same with **MTEXT** command.

