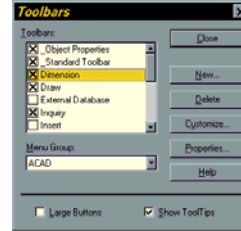


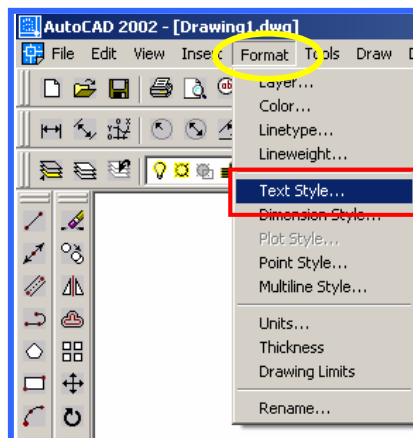
Dimensions in AutoCAD

Dimensioning in AutoCAD is automatic; lines, arrows and text are all taken care of by the dimension commands.

AutoCAD dimensions are special blocks which can easily be edited or erased as necessary.

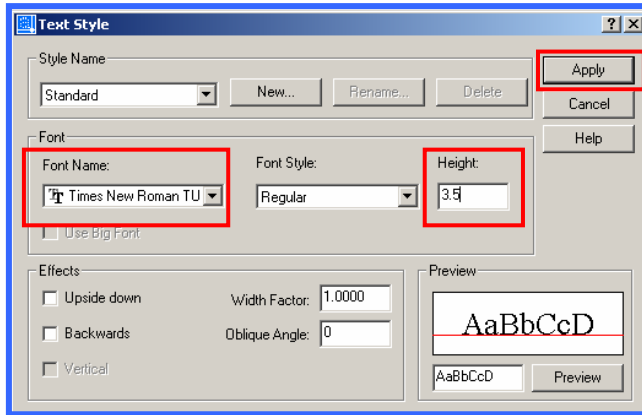


Dimensioning in AutoCAD

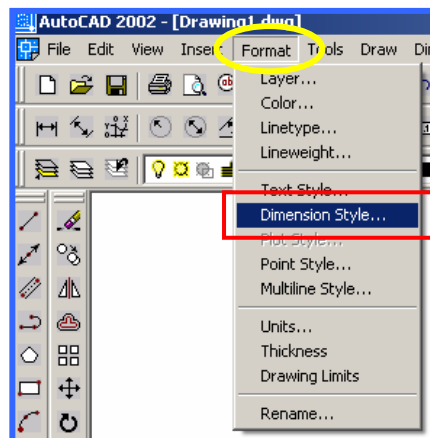


Before setting dimension style, format Text Style

Dimensioning in AutoCAD



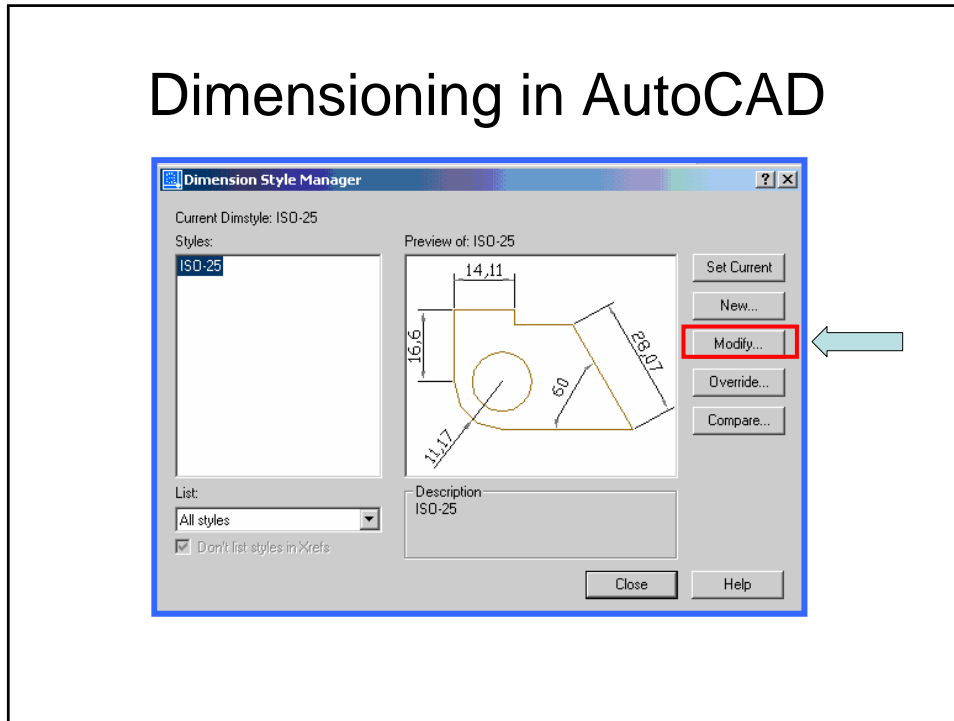
Dimensioning in AutoCAD



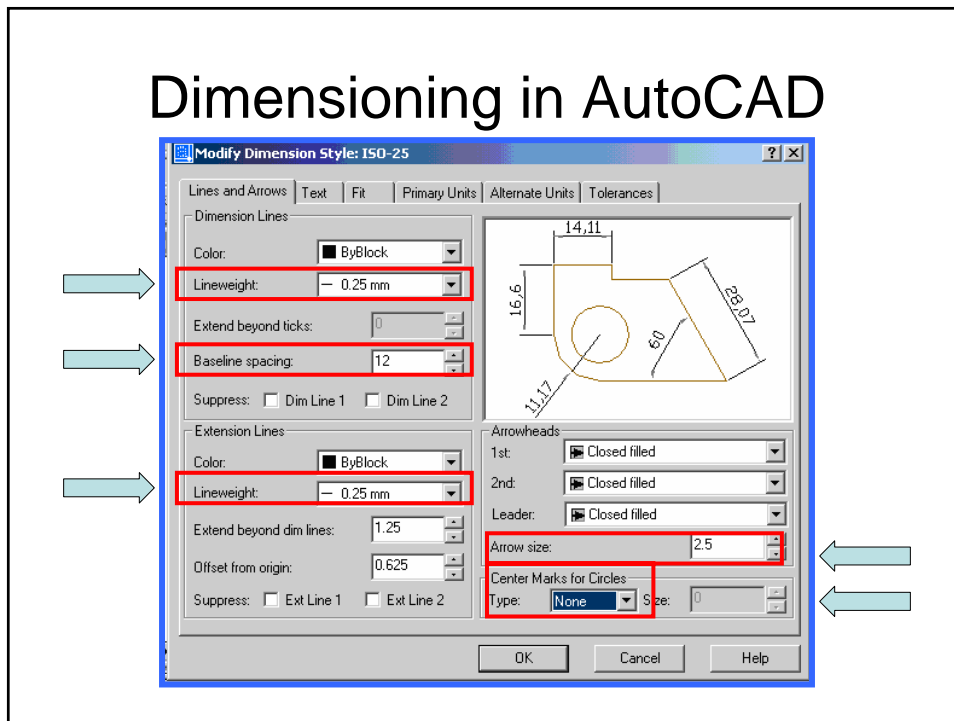
To set the dimension variables

open Dimension Style ...

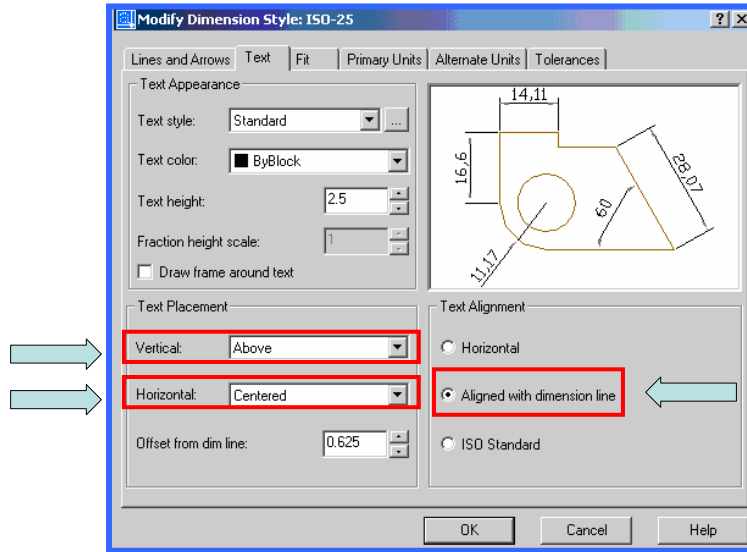
Dimensioning in AutoCAD



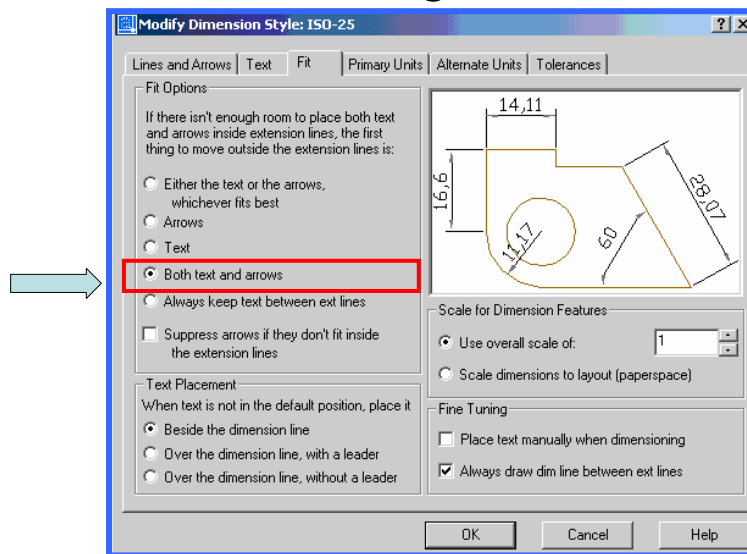
Dimensioning in AutoCAD



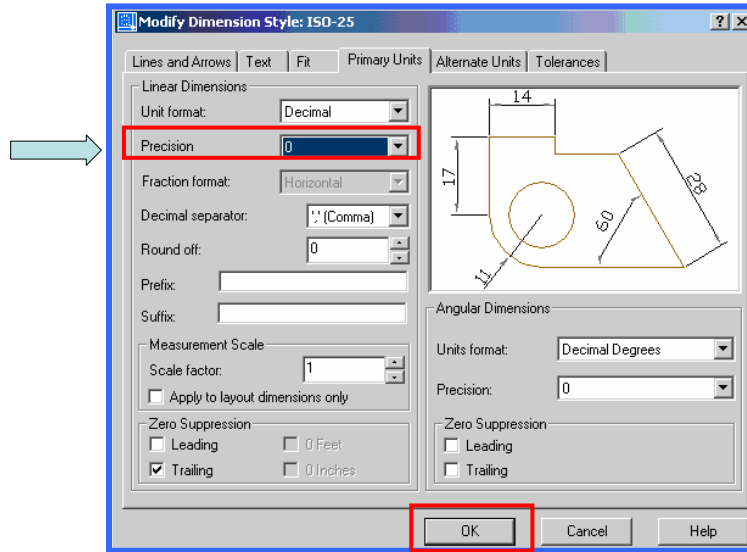
Dimensioning in AutoCAD



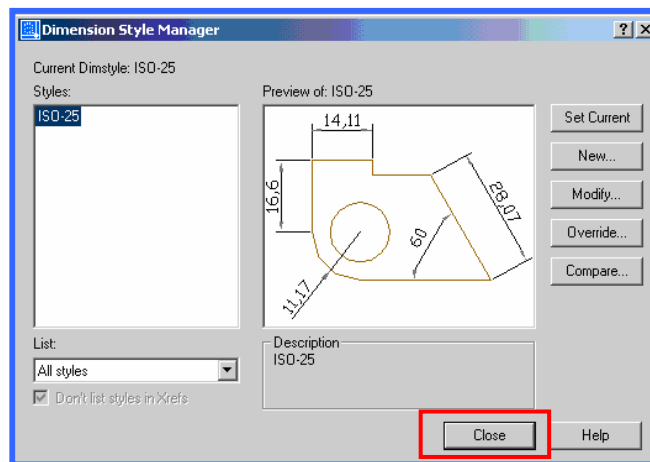
Dimensioning in AutoCAD



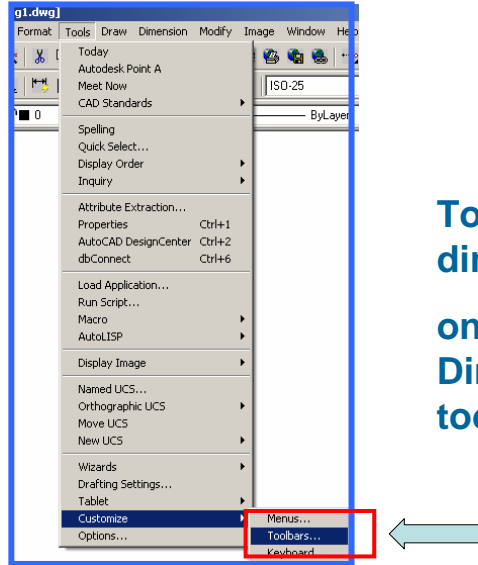
Dimensioning in AutoCAD



Dimensioning in AutoCAD

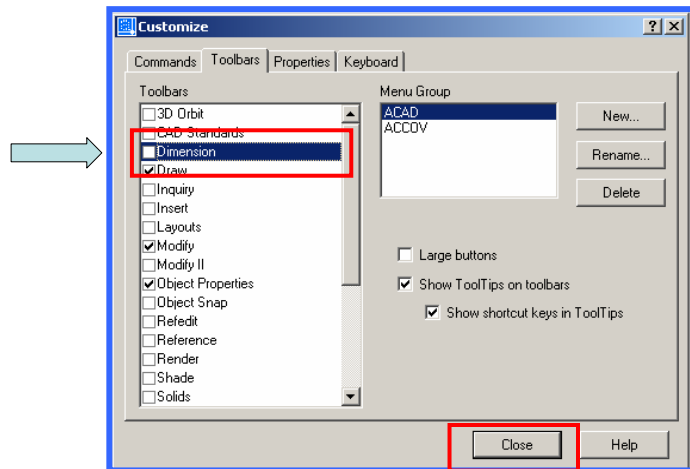


Dimensioning in AutoCAD

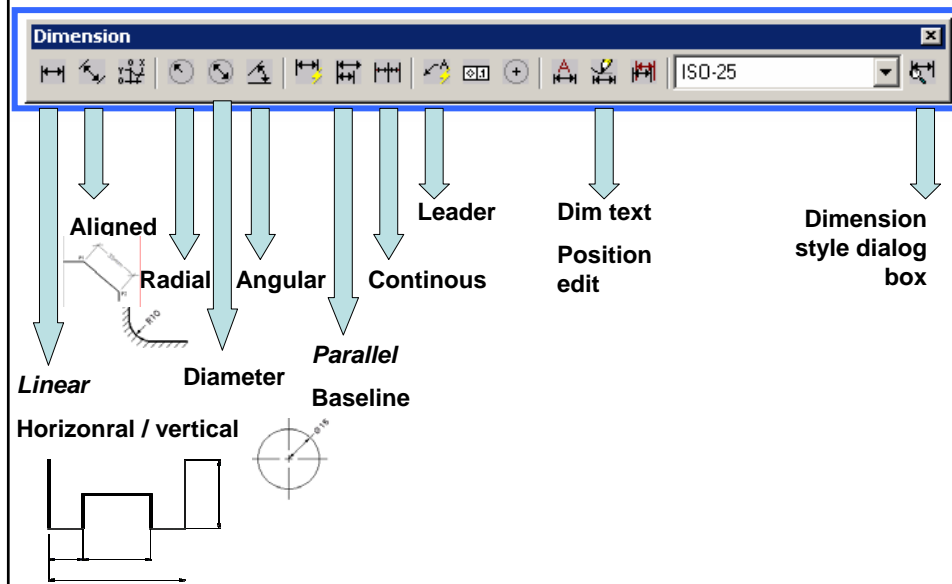


To give dimensions,
one needs
Dimensioning
toolbar

Dimensioning in AutoCAD



Dimensioning in AutoCAD




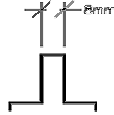
Special Characters

- Diameter %%C Ø
i.e. %%C 50 Ø 50
- Degree %%D °
i.e. 50 %%D 50 °
- Plus/minus %%P ±
i.e. 50 %%P 2 50 ± 2


Dimensions in AutoCAD

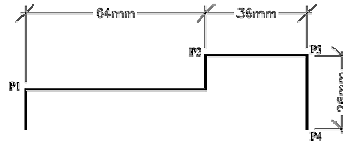
The Linear Dimension Command

Toolbar	
Pull-down	Dimension/Linear
Keyboard	DIMLINEAR




The Continue Dimension Command

Toolbar	
Pull-down	Dimension/Continue
Keyboard	DIMCONTINUE




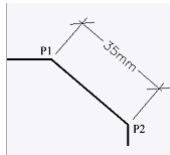
The Baseline Dimension Command

Toolbar	
Pull-down	Dimension/Baseline
Keyboard	DIMBASELINE


Dimensions in AutoCAD

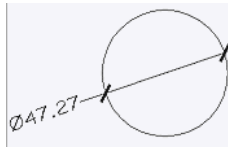
The Aligned Dimension Command

Toolbar	
Pull-down	Dimension/Aligned
Keyboard	DIMALIGNED



The Diameter Dimension Command

Toolbar	
Pull-down	Dimension/Diameter
Keyboard	DIMDIAMETER



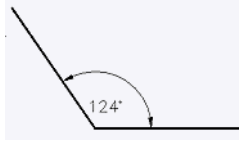
The Radius Dimension Command

Toolbar	
Pull-down	Dimension/Radius
Keyboard	DIMRADIUS

Dimensions in AutoCAD

The Angular Dimension Command

Toolbar	
Pull-down	Dimension/Angular
Keyboard	DIMANGULAR



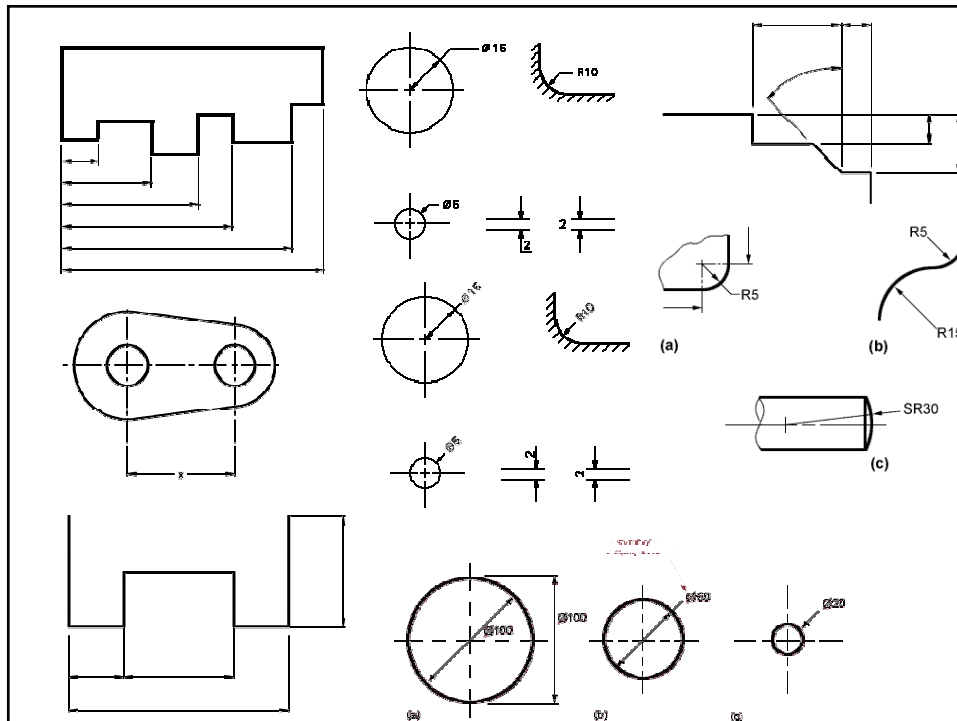
The Leader Command

Toolbar	
Pull-down	Dimension/Leader
Keyboard	LEADER



The Dimension Text Edit Command

Toolbar	
Pull-down	Dimension/Align Text/options
Keyboard	DIMTEDIT



Example

1st Select icon

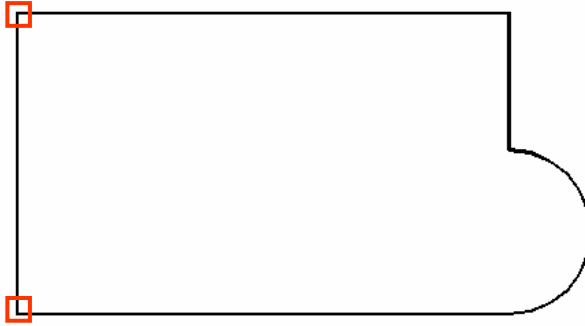


2nd Select point

+

4th point here

3rd Select point



Example

